

SunWize *PLUS* Systems – Complete grid-tie systems featuring the Sharp Solar Racking System (SRS)



The Sharp SRS racking system offers a streamlined system with clean aesthetics

If installation time and aesthetics are a concern for you, then check out the SunWize Plus Systems featuring the Sharp Solar SRS. These grid-tie systems offer the same quality engineering as our standard grid-tie systems and feature the following UL listed components:

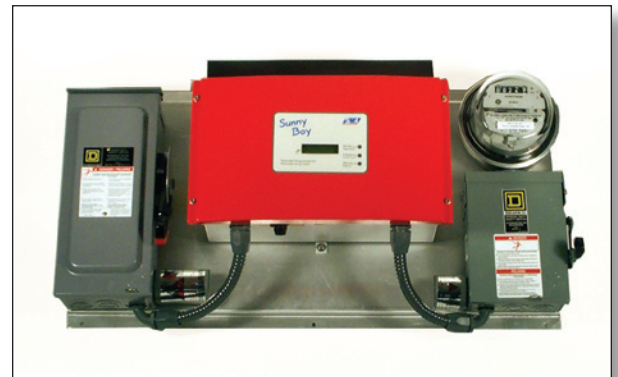
- **Sharp 187W module:** top quality, polycrystalline modules deliver high performance. Sharp modules have a 25-year limited warranty.
- **Sharp SRS:** an innovative, low-profile shared rail system requires up to 30% less rail than conventional systems; 5-year limited warranty with the option for a 5-year extension.
- **SMA inverter:** high-efficiency, pure sine wave inverter features LED display, communications package option, a corrosion resistant outdoor enclosure, 5-year limited warranty.

- **SunWize Inverter Power Center:** includes painted aluminum panel with outdoor AC and DC disconnect switches and an optional cumulative kWh utility grade meter.
- **Wiring:** includes #10 AWG Multi-contact (MC) wiring for PV string output connections; #8 AWG SRS rail grounding system; NEMA 4X string pull box with accessory two-hole fittings. Wiring management system includes clips and ties. The installer supplies the home run wiring from the solar array to the main panel.
- **Documentation:** includes electrical drawings, system warranties and detailed installation and owner's manuals.

The Sharp SRS roofing system is compatible with all types of asphalt shingles on peak and hipped roofs for retrofit or new construction as well as S-tile and flat tile roofs. The SRS uses a simplified, flexible mounting system and other unique features to improve both the speed of installation and aesthetics.

SHARP SRS System Features:

- Trim covers provide improved aesthetics
- Talon clips integrate with mounting structure for a cleaner appearance, module to module hold down and grounding
- Adjustable sliders simplify mounting
- Steel structural components are treated with SuperDyma®
- Rails are precut in one- to four-module lengths making installation easier and facilitating various array layouts



SunWize Power Center with SMA 1800U Inverter and optional kWh meter

SunWize PLUS Systems include a prewired SunWize Power Center, prepackaged hardware kits, wiring and documentation – saving you installation time and money.

To help speed installation time we've completed the hardware sorting for you by including prepackaged hardware kits for the splices, module Talon clips and trim covers. Additionally, SunWize has preassembled the sliders including a top and bottom bracket. These kits also reduce the time you spend inspecting shipments because you have fewer parts to count and identify. The SRS features an innovative Talon clip. They grip each module securely in place while integrating so smoothly that no parts of the mounting structure are visible on the roof. Talon clips also serve as module-to-module grounding, eliminating the need for costly lugs and copper wire and additionally, saving time. Front, top and side covers provide a finished appearance while decreasing wind drag and improving water channeling. The result is a streamlined system with clean aesthetics.



SRS Systems use the Sharp 187W module



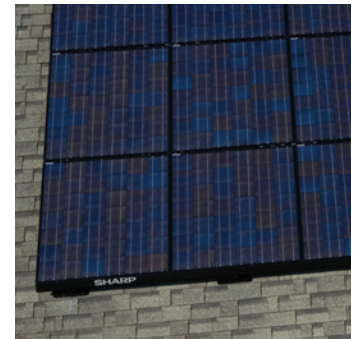
The adjustable slider assemblies make it easier to achieve straight rail alignment



Better aesthetics are just a click away with Talon clips, hidden by trim covers



Pre-cut rails are easily spliced together



Trim covers offer form, function, and a finishing touch for a cleaner looking installation

SunWize Plus Systems include enough SRS mounting hardware for two or more different array layouts for portrait or landscape layout. Talk to your SunWize representative about available systems and pricing.

SW Plus Model	PV Module Model	Series x Parallel	Inverter Model	Inverter Max. Power (kW)	Output VAC	PV Array Watts (STC)	PV Array Watts (CEC)	MSRP
999GTS100	ND-187U1	10 x 1	SB1800U	1.8	120	1870	1648.0	\$16,600.00
999GTS101	ND-187U1	9 x 1	SB1800U	1.8	120	1683	1483.2	\$15,400.00
999GTS102	ND-187U1	10 x 2	SB3300U	3.3	240	3740	3296.0	\$30,200.00
999GTS103	ND-187U1	13 x 1	SB3300U	3.3	240	2431	2142.4	\$21,600.00
999GTS104	ND-187U1	12 x 1	SB3300U	3.3	240	2244	1977.6	\$20,300.00
999GTS105	ND-187U1	11 x 1	SB3800U	3.8	240	2057	1812.8	\$18,800.00
999GTS106	ND-187U1	11 x 2	SB3800U	3.8	240	4114	3625.6	\$33,100.00
999GTS107	ND-187U1	12 x 2	SB3800U	3.8	240	4488	3955.2	\$36,800.00
999GTS108	ND-187U1	12 x 3	SB6000U	6.0	240*	6732	5932.8	\$53,300.00
999GTS109	ND-187U1	11 x 3	SB6000U	6.0	240*	6171	5438.4	\$49,200.00
999GTS110	ND-187U1	15 x 2	SB6000U	6.0	240*	5610	4944.0	\$45,500.00
999GTS111	ND-187U1	14 x 2	SB6000U	6.0	240*	5236	4614.4	\$43,000.00
999GTS112	ND-187U1	13 x 2	SB6000U	6.0	240*	4862	4284.8	\$40,200.00

*208/277 VAC versions available for 3-phase installations
SunWize PLUS Systems must be installed by a qualified electrical or solar contractor