

SOLADECK INSTALLATION INSTRUCTIONS

DO NOT PROCEED WITH INSTALLATION UNTIL YOU HAVE READ ENTIRE INSTRUCTIONS INCLUDING WARNINGS



WARNING



DO NOT WORK ON ROOF IF SURFACE IS WET, FROSTED, ICE OR SNOW COVERED
USE LADDERS SAFELY

USE HAND & EYE PROTECTION WHEN WORKING WITH POWER TOOLS

USE EXTREME CAUTION TO AVOID CONTACT WITH POWER LINES. CONTACT WITH POWER LINES, ELECTRIC LIGHTS OR POWER CIRCUITS MAY BE FATAL

Installation of this product should be attempted only by individuals skilled in the use of the tools and equipment necessary for installation. Protect yourself and all persons and property during installation. If you have any doubt concerning your competence or expertise, consult a qualified expert to perform the installation.

R.S.T.C. Enterprises Incorporated assumes no responsibility or obligation for the failure of an architect, contractor, installer, or building owner to comply with all applicable laws, building codes and requirements, and adequate safety precautions.

One Year Limited Warranty

Important: Evidence of original purchase is required for warranty service.

WARRANTOR: RSTC Enterprises Incorporated

ELEMENTS OF WARRANTY: RSTC warrants for one year to the original retail owner, this SolaDeck is free from defects in materials and craftsmanship with only the limitations or exclusions set out below

WHAT IS NOT COVERED: This warranty covers only defects in materials and workmanship provided by RSTC Enterprises, and does not cover equipment damage or malfunction from misuse, abuse, accident, act of God. Installation must be in accordance with our written instructions. RSTC Enterprises will not be liable for any installation charges associated with replacement, incidental or consequential damages resulting from your use of or inability to use the Sola Deck

REMEDY: Your only remedy under this warranty is the exchange or replacement in the event that the product does not conform to this warranty. This warranty gives you specific legal rights, and you may also have other rights which vary from state to state.

CLAIMS PROCESS: To make a claim under this warranty, the product should be shipped postage paid, with original purchase receipt to:

RSTC ENTERPRISES
2219 HEIMSTEAD ROAD
EAU CLAIRE, WI 54703

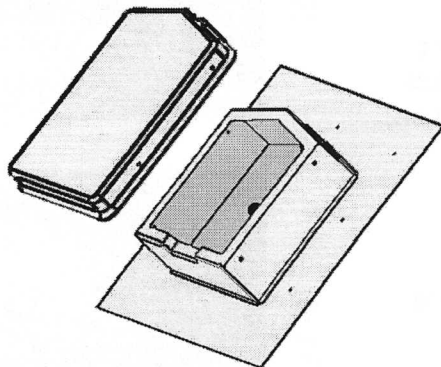
1-866-367-7782 or www.commdeck.com

TOOLS & PARTS LIST

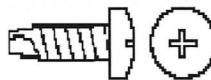
Marker
Stud Finder
Utility Knife

Cordless Drill
#2 Phillips Drive Bit
Roof Cement

Pry Bar



Sola Deck Cover & Base with DIN rail mounted to interior



(4) 1/2" Thread Cut Screws



(4) Bonded Sealing Washer



(7) Trusshead Screw



(1) Foam Gasket

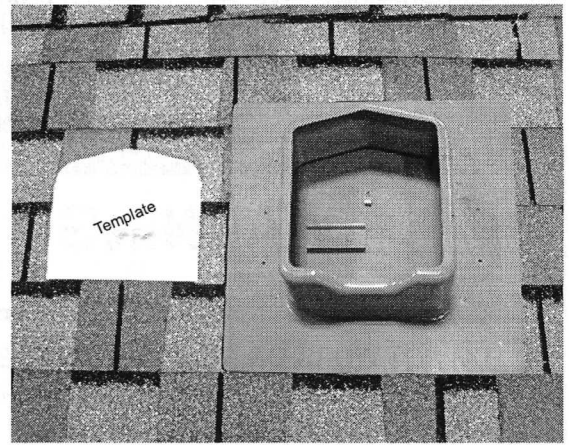
INSTALLATION

Remove the SolaDeck from packaging and locate all hardware and parts. Read all instructions before beginning the installation.

MARK THE LOCATION ON THE ROOF

Cut out Template along dotted line. Use the stud finder to locate the closest truss. **Note: Be sure conduit entry hole is not located over truss.** Set the SolaDeck on the roof where it will be located. Line up the bottom edge of the SolaDeck flashing with the bottom edge of shingle row. Replace the SolaDeck with the template. **Slide the template 1 shingle row up from the row where the SolaDeck flashing ended.** (Refer to Fig 1) Use the marker to trace the outline of the template on the shingles.

FIG. (1)



PREPARE THE ROOF

Use utility knife, cut out shingles from template you traced. Do not cut bottom most shingle layer. **Caution:** When using utility knife, always keep knife-edge pointed away from your body. Use pry bar to carefully lift shingles surrounding the opening. Remove nails that prevent SolaDeck from sliding into place. (Refer to fig. 2) **Caution:** when drilling do not drill through rafter or truss.

FIG. (2)

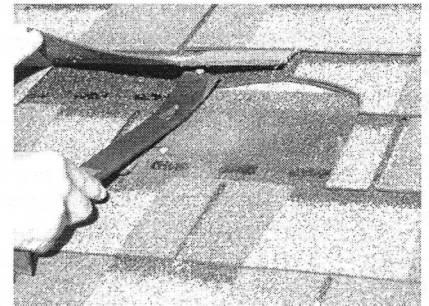


FIG. (3)



Slide Sola Deck into place. Top of flashing should seat underneath shingles. (Refer to fig. 3) Lift the shingles to expose the pre-punched holes in the flashing. Install one trusshead screw in each of the (7) pre-punched holes. Finish by applying roof cement under the shingles that contact the flashing.

COMPLETING THE INSTALLATION

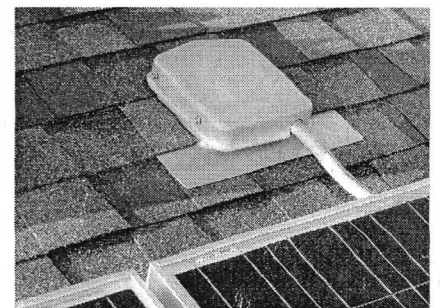
If you are installing solar panels at the time of installation, follow the solar panel manufacturer's instructions for wiring and grounding. **Always follow the NEC code and guidelines for correct grounding procedures**

Attach foam gasket to the inside of cover, where it will make contact with the wire sump on base unit. (Refer to Fig. 4) Install the SolaDeck cover to the base unit. Align predrilled holes of base unit with holes on side of cover. Insert the 3/8" Thread Cutting Screws into the four predrilled holes. Be careful not to over tighten.

FIG. (4)



FIG. (5)



OPTIONAL PANEL TO CAVITY INSTRUCTIONS

SolaDeck has two centering dimples on front of the base unit. These dimples line up with the half-moon cutouts in the cover. Locate dimples, use a punch or drill the base unit to accept 1/2" or 3/4" conduit. Typically Seal Tight PVC conduit is used for this. The two half moon cuts will allow the cover to clear conduit.