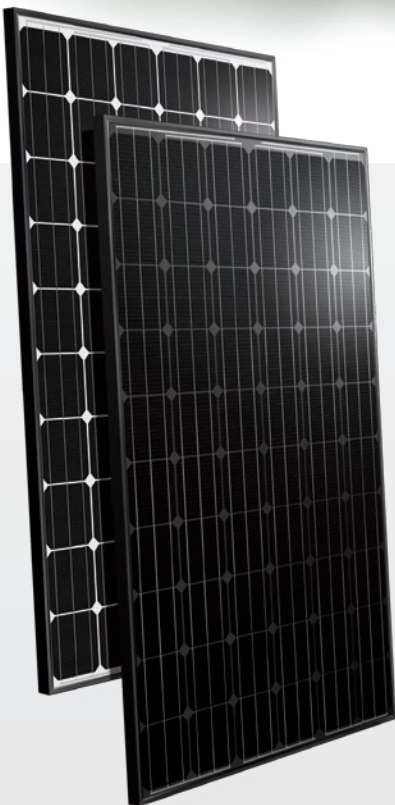


The **leading** force
in **green** power



GreenTriplex PM250M00

Mono-crystalline Photovoltaic Module

245W
265W

Power Range

245 ~ 265 Wp



Highly Strengthened Design

Module complies with advanced loading tests to meet 5400 Pa loading requirements



Light Trapping Capability

Superior performance under weak light conditions such as dawn, dusk, and cloudy days



3 Busbar Design

Enhances current transmission and module reliability

Optional



Self-clean

AUO unique photocatalyst treatment decomposes surface contamination, reduces O&M cost and increases performance

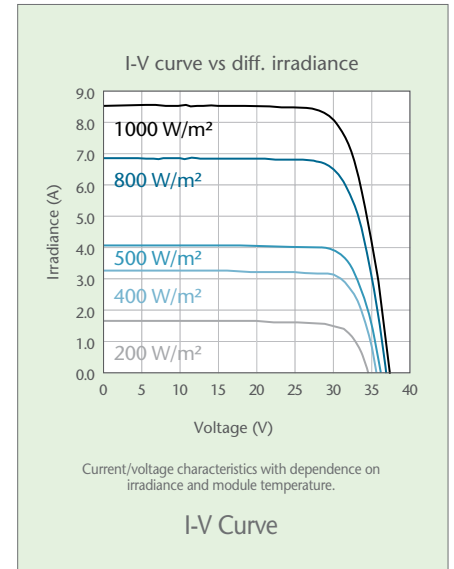
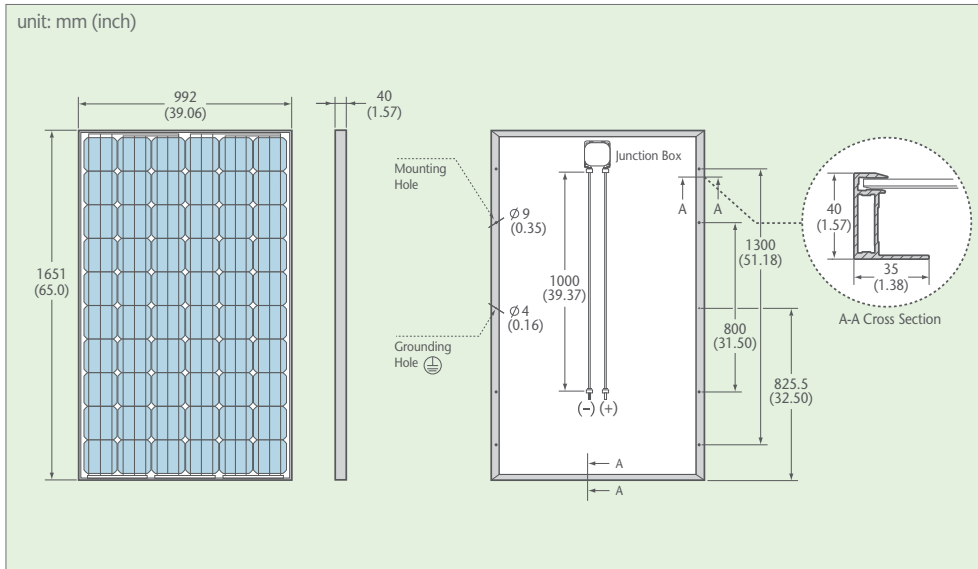


AC Photovoltaic

Integrated with a Micro-inverter, Module has high and stable AC power output via panel level MPPT



GreenTriplex PM250M00 (245 ~ 265 Wp)



Electrical Data

Typ. Nominal Power P_N	245 Wp	250 Wp	255 Wp	260 Wp	265 Wp
Typ. Module Efficiency	14.70%	15.30%	15.60%	15.90%	16.20%
Typ. Nominal Voltage V_{mp} (V)	30.78	30.82	30.86	30.90	30.95
Typ. Nominal Current I_{mp} (A)	8.09	8.22	8.34	8.46	8.58
Typ. Open Circuit Voltage V_{oc} (V)	37.80	37.86	37.92	37.98	38.04
Typ. Short Circuit Current I_{sc} (A)	8.60	8.66	8.72	8.78	8.84
Maximum Tolerance of P_N	0 / +3%				

• Above data are the effective measurement at Standard Test Conditions (STC)
 • STC: irradiance 1000 W/m², spectral distribution AM 1.5, temperature 25 ± 2 °C, in accordance with EN 60904-3

• The given electrical data are nominal values which account for basic measurements and manufacturing tolerances of ±10%, with the exception of P_N . The classifications is performed according to P_N
 • Black backsheet is utilized for power range 245-260W; White backsheet is for 250-265W

Temperature Coefficient

NOCT	46 ± 2 °C
Typ. Temperature Coefficient of P_N	-0.48%/K
Typ. Temperature Coefficient of V_{oc}	-0.36%/K
Temperature Coefficient of I_{sc}	0.03%/K

• NOCT: Normal Operation Cell Temperature, measuring conditions: irradiance 800 W/m², AM 1.5, air temperature 20 °C, wind speed 1 m/s

Operating Conditions

Operating Temperature	-40 ~ +80 °C
Ambient Temperature Range	-40 ~ +45 °C
Max. System Voltage IEC/UL	1000 V / 600 V
IP Protection Level	IP65
Serial Fuse Rating	15 A
Maximum Surface Load Capacity	Tested up to 5400 Pa according to IEC 61215 (advanced test)

Mechanical Characteristics

Dimensions (L x W x H)	1651 x 992 x 40 mm (65.01 x 39.06 x 1.57 in)
Weight	19.3 kg (42.5 lbs)
Front Glass	High transparent solar glass (tempered), 3.2 mm (0.13 in)
Cell	60 monocrystalline solar cells, 156 x 156 mm (6 x 6 in)
Cell Encapsulation	EVA
Back Sheet	Composite film, black / white
Frame	Anodized aluminum frame
Junction Box	Junction box with 3 bypass diodes
Cables	1 x 4 mm ² (0.04 x 0.16 inch ²), length: each 1.0 m (39.37 in)
Connector Type	Tyco plug / MC4 compatible

Warranties and Certifications

Product Warranty	5 years for material and workmanship
Performance Guarantee	Guaranteed output of 90% for 10 years and 80% for 25 years
Certifications	According to IEC 61215, IEC 61730 and UL 1703 guidelines *

* Please confirm other certifications with AUO official dealers



AU Optronics Corporation

No. 1, Li-Hsin Rd. 2, Hsinchu Science Park, Hsinchu 30078, Taiwan
 Tel: +886-3-500-8899 Email: solar@auo.com www.AUO.com www.AUOsolar.com

AUO Green Solutions
 Printed with Soy Ink

